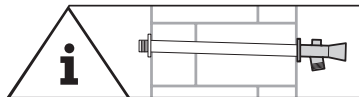


Installation and Operating Manual
Final installation FROSTI®-PLUS | Fig. 574 11





Installation and operation

Read the manual and follow the instructions before installation. Installation and maintenance must be carried out by qualified plumbers.

Provide manual to the plant operator and keep on hand for further reference!

The place of installation may not be at risk of flooding.

Perform a leak test after installation and before commissioning!

Priority must be given to the national standards and provisions on sanitary installations and accident prevention.

All dimension specifications are given in mm.

Warranty

No warranty in case of:

- Non-compliance with the manual.
- Damage due to incorrect installation.
- Unauthorised modification of the product.

Use

The KEMPER FROSTI®-PLUS is used as a frost-proof outdoor tap. Do not use the product for other purposes than described above. Any other uses constitute misuse.

Warnings

Be sure to read and follow the warnings in the manual. Failing to do so can lead to personal injury or material damage!

Important warnings:



Warning! Highlights risks that may result in injury, material damage or contamination of drinking water.

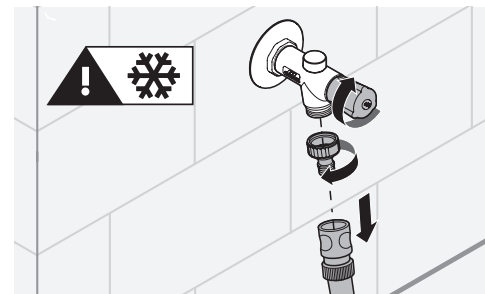


Note! Highlights risks that may result in damage to the plant or dysfunction.

Important advice to the operator

Medium: water
maximum operating temperature 90 °C,
pressure rating PN 16

1. The valve should only be used
 - in good order and condition
 - as intended
2. **During periods prone to frost, always separate the hose and all screw connections from the tap.**



Maintenance

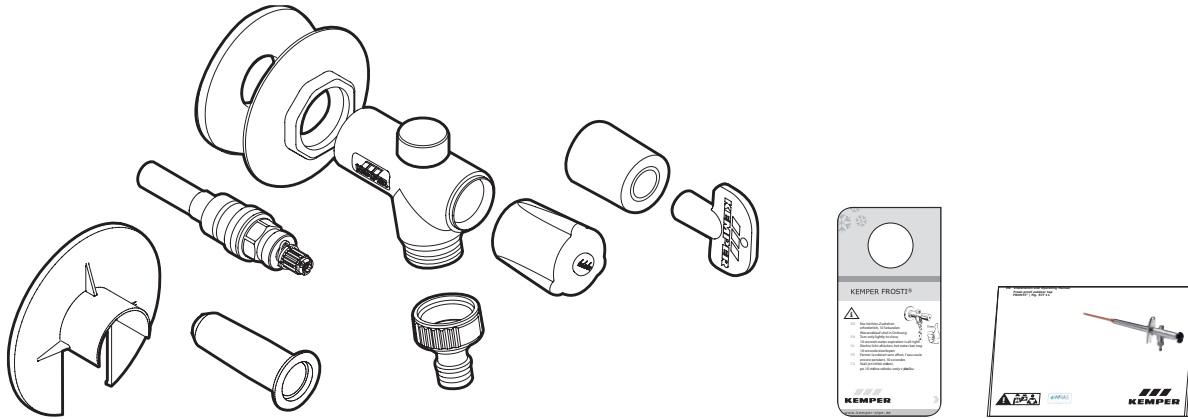
In accordance with BS EN 806-5, maintenance is to be carried out on the tap annually.

Be sure to comply with the local regulations on waste recycling and disposal.



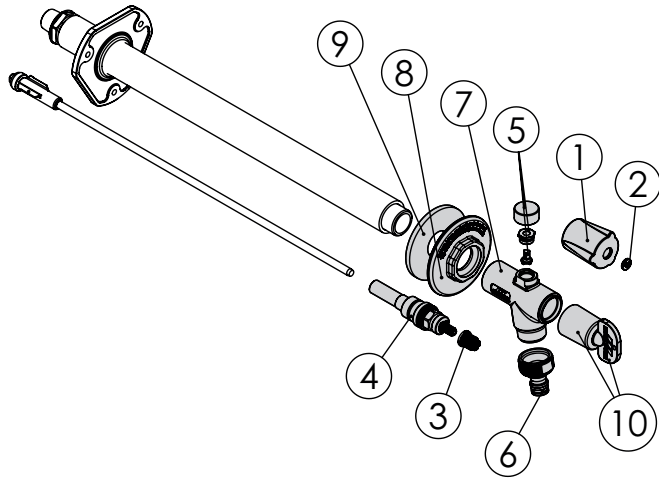


Fig. 574 11

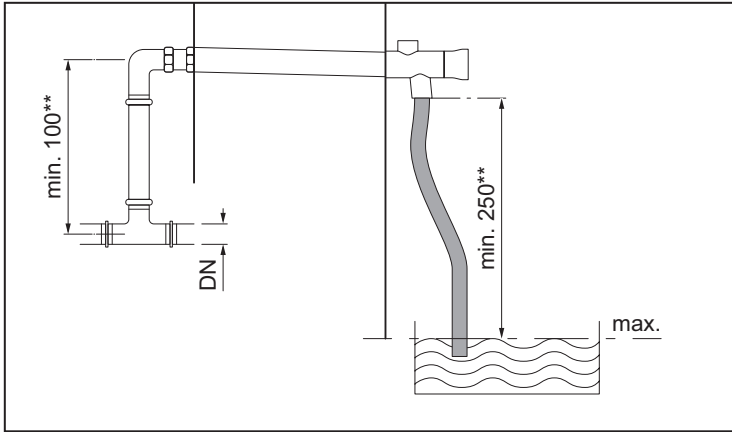


BS EN 1717
BS EN 806





Item	Designation	Art.-No.
1-3	FROSTI® socket key operated handle	5740100100
4	head part	E010557401015KP
5	breather	E21055730000100
6	hose coupling	Z21005741601500
7 (including 5)	FROSTI® valve body incl. aerator	5741201500
8	collar	L41055740301500
9	PE gasket	C31005740000100
10+3	socket key for FROSTI®	5740000100
Not illustrated	mounting kit for FROSTI®-PLUS	5740000500
Not illustrated	extension for FROSTI®-PLUS	5740000200
Not illustrated	lockable handle for FROSTI®	5750000300
Not illustrated	dismantling key for lockable handle	5750100300



Drinking water installation

In order to prevent stagnation and bacterial contamination in the supply, it is recommended to loop the tap in the drinking water system.

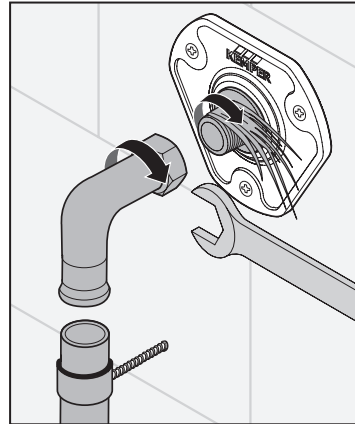
- * For technical and hygienic reasons, it is necessary to install a loop of at least min. 100 mm and max. 10 x DN as a functional individual supply line.
- ** The tap must be installed at least 250 mm above the maximum fluid level.

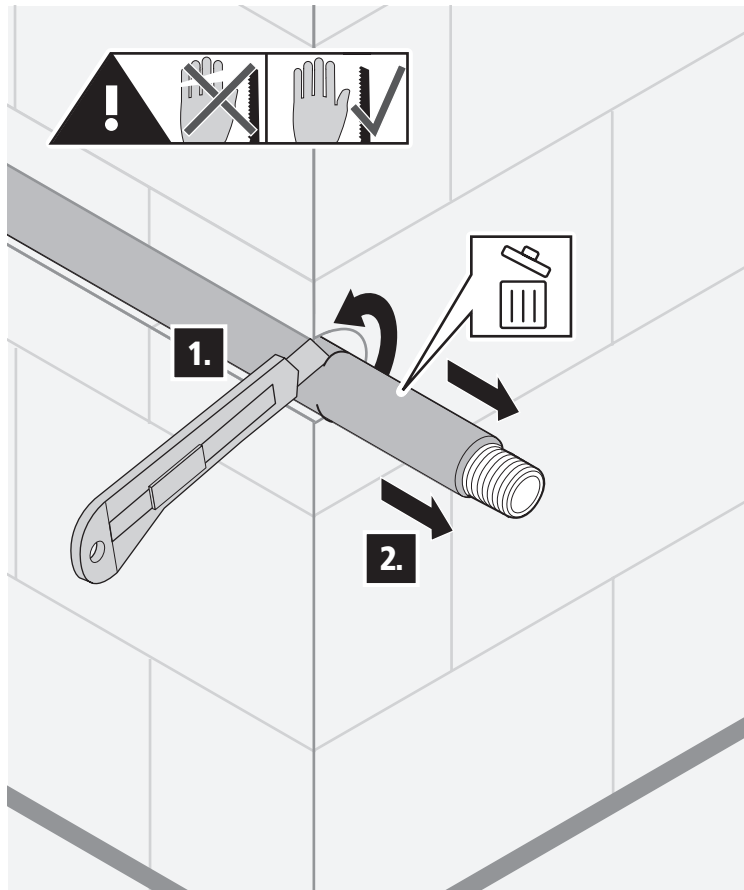
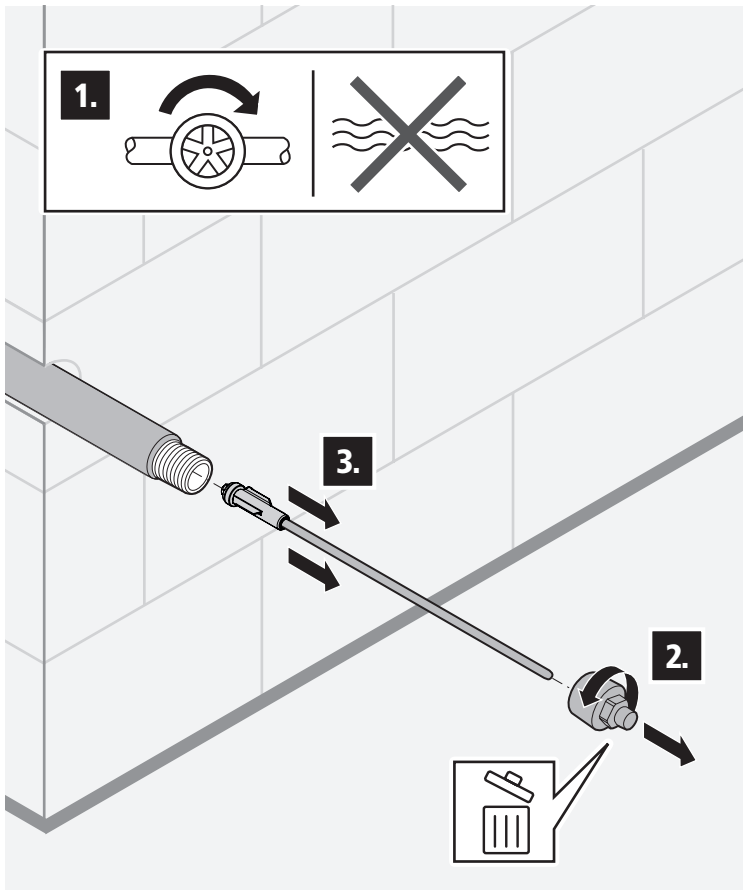
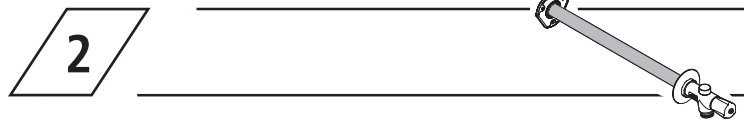
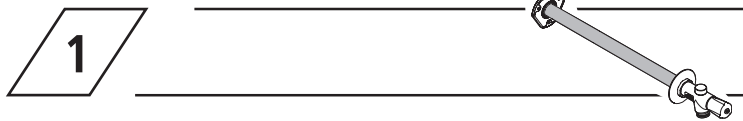


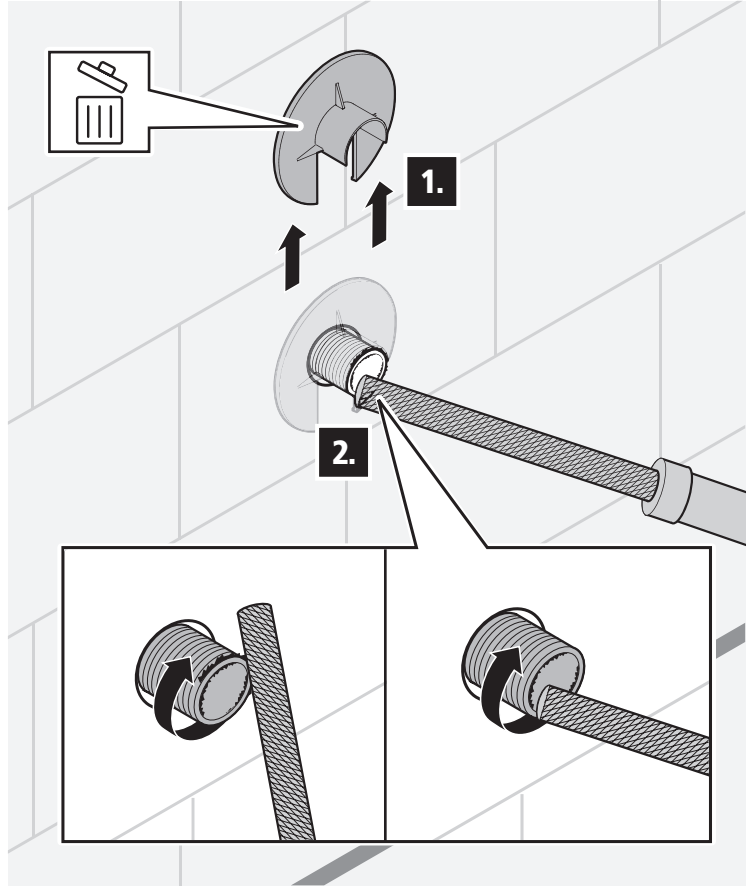
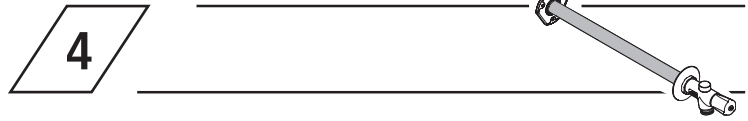
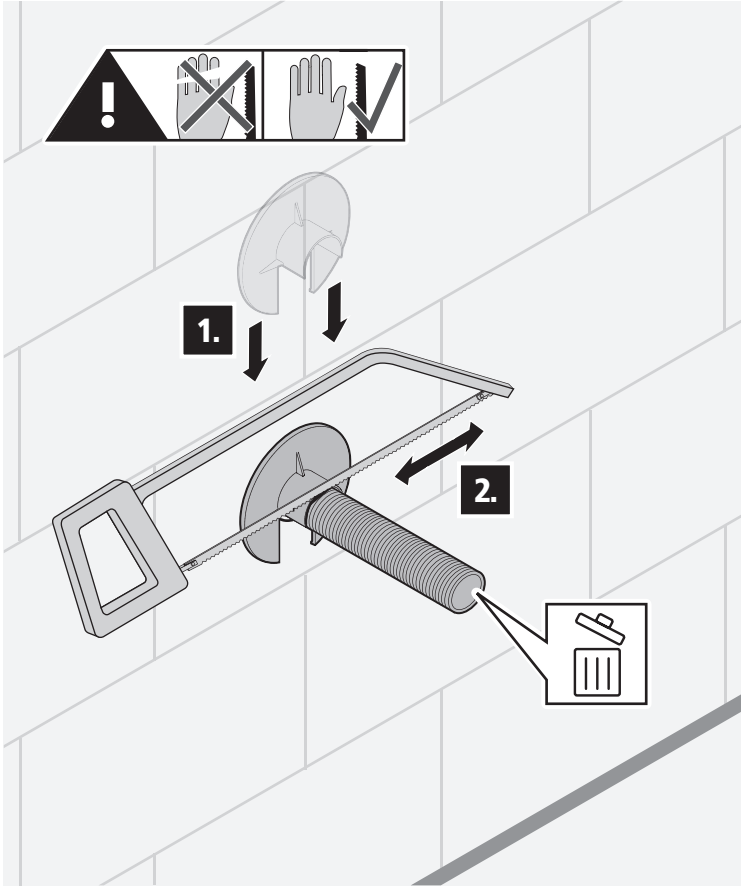
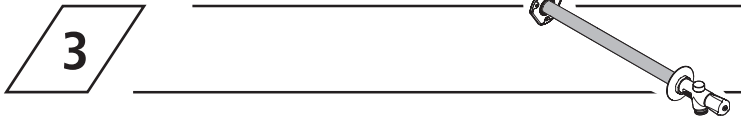
Warning! The FROSTI must be installed in accordance to Water Regulations, schedule 2, paragraph 15. The level of protection must be appropriate to the fluid category.

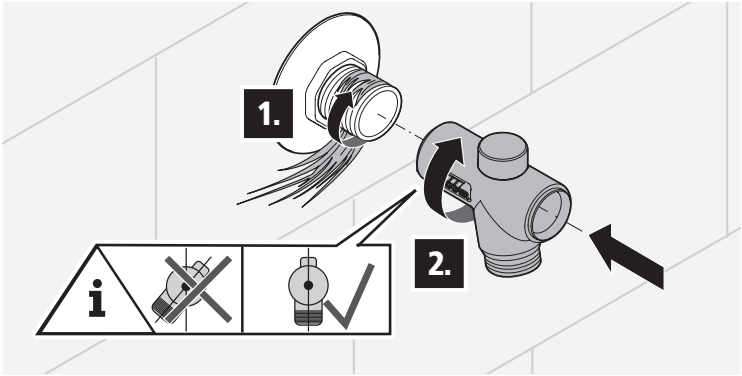
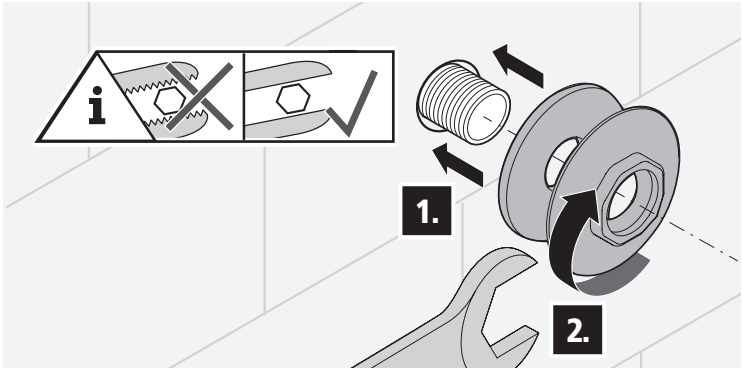


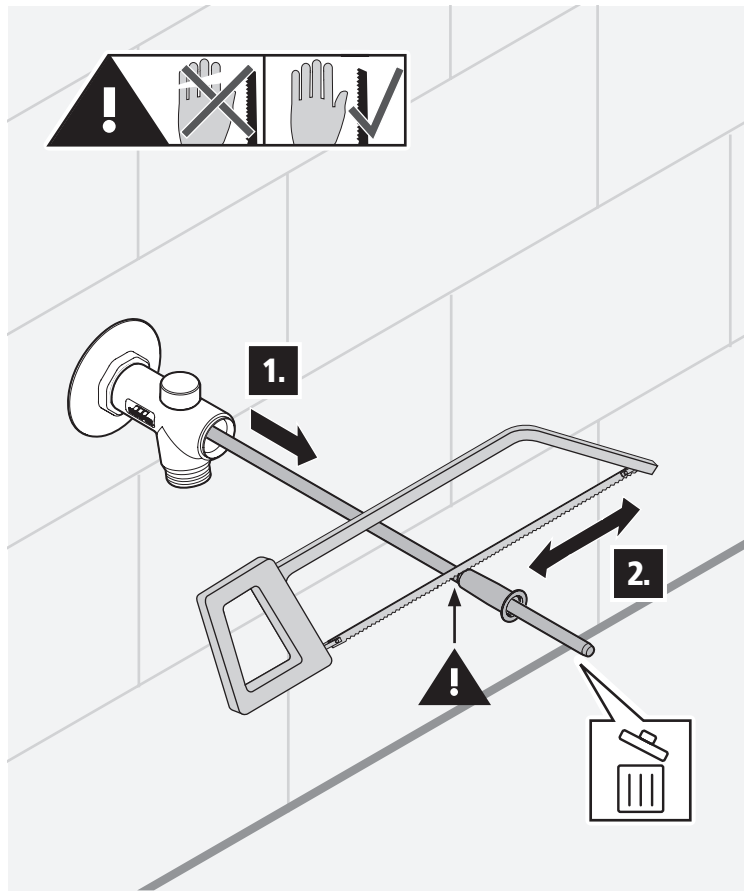
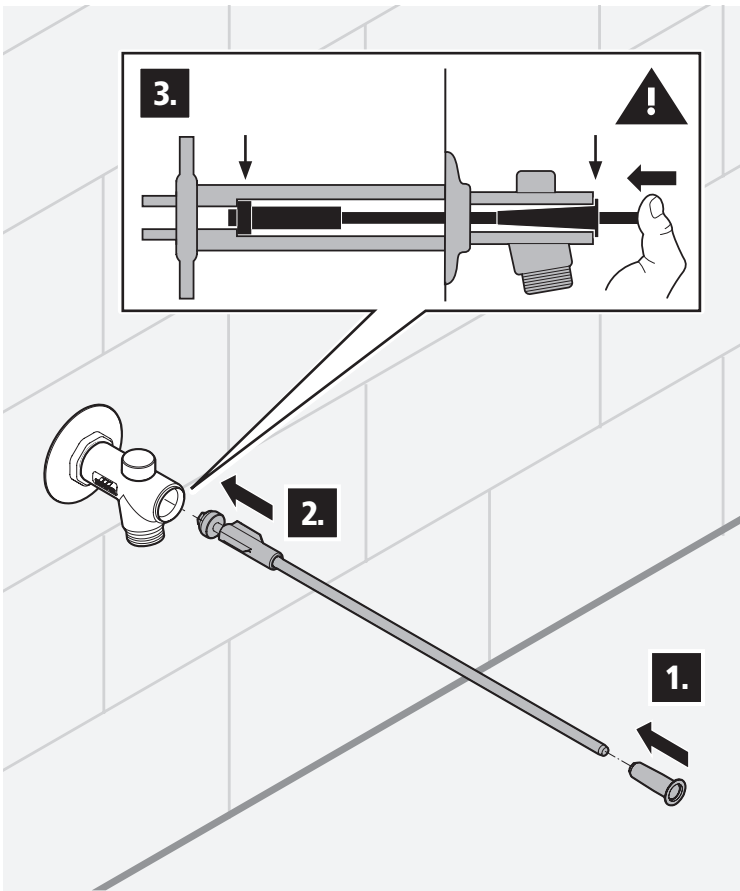
BS EN 1717

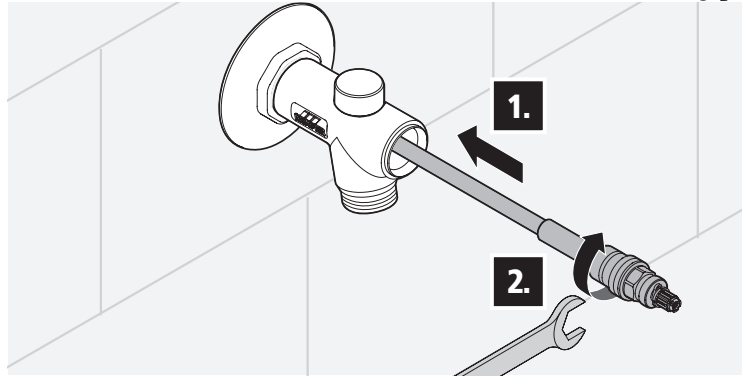
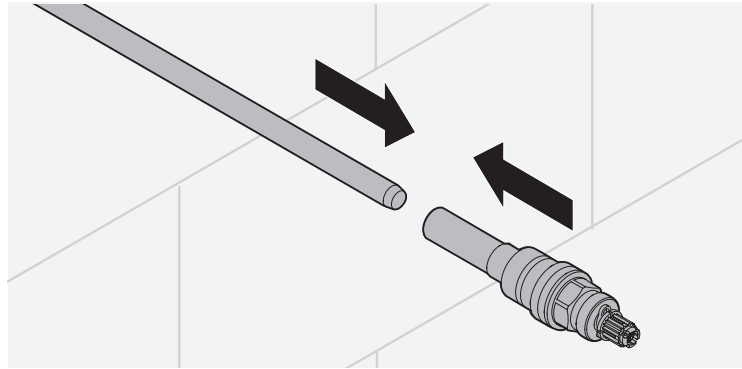
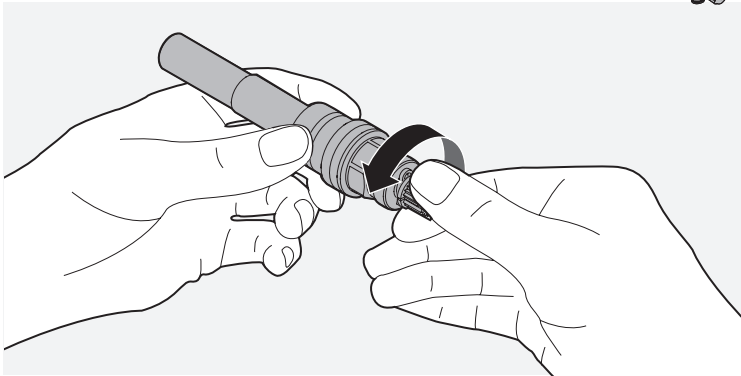
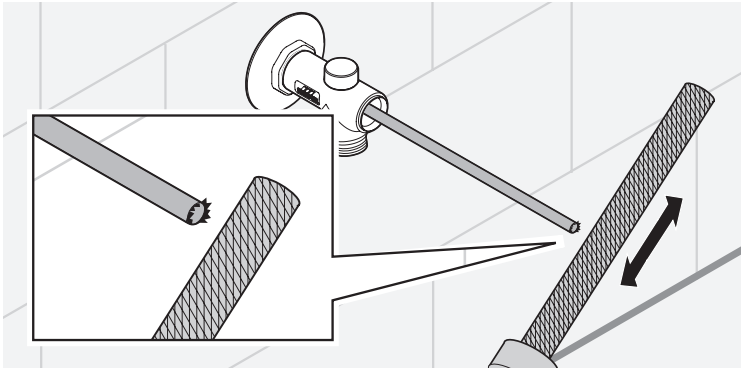




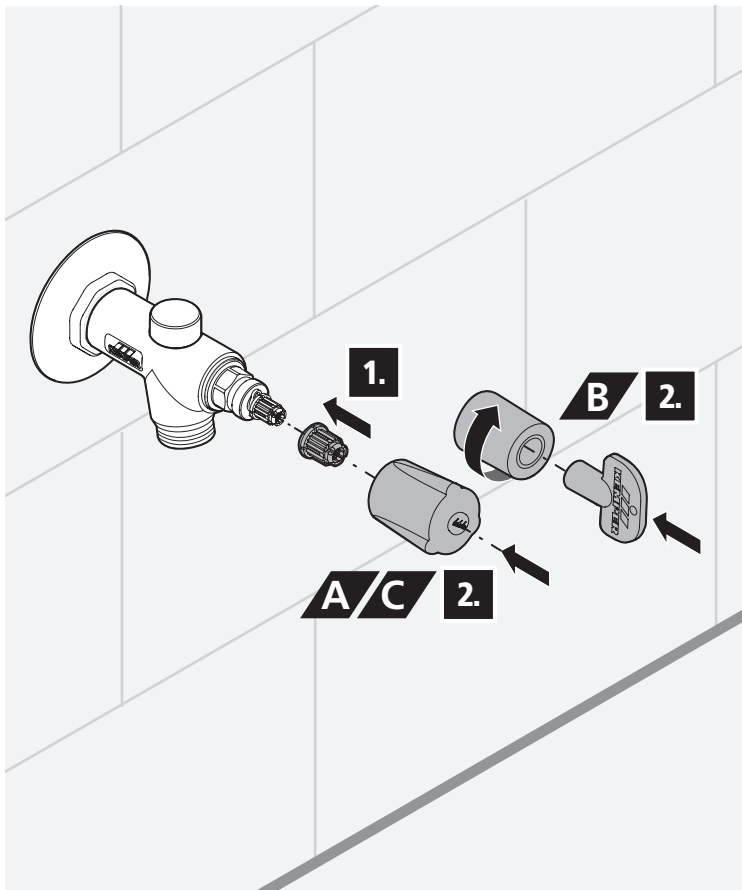
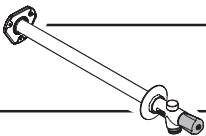




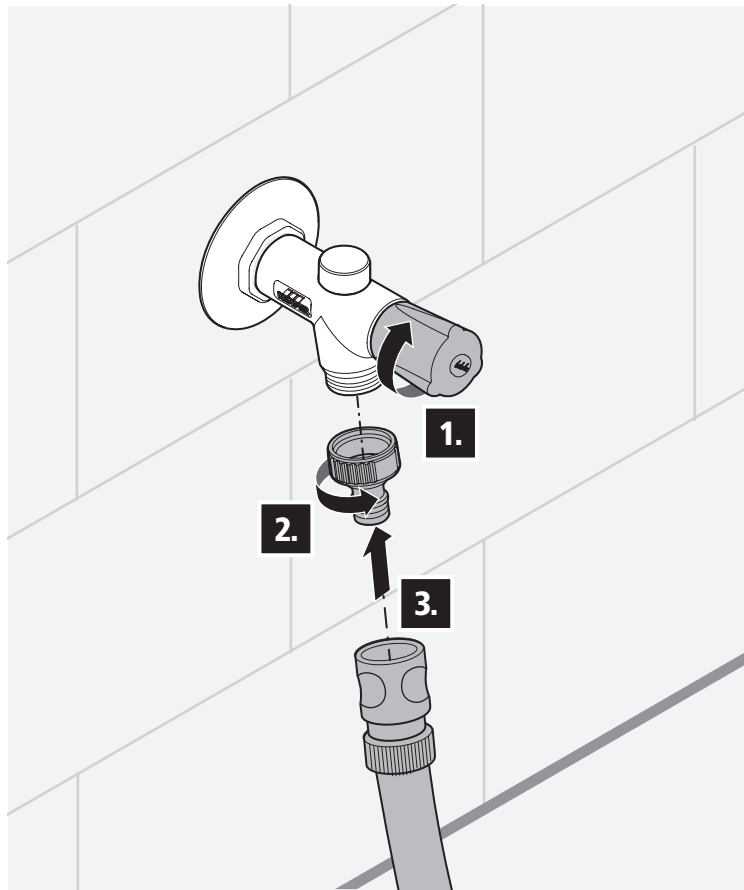
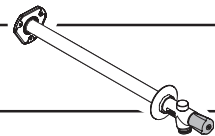


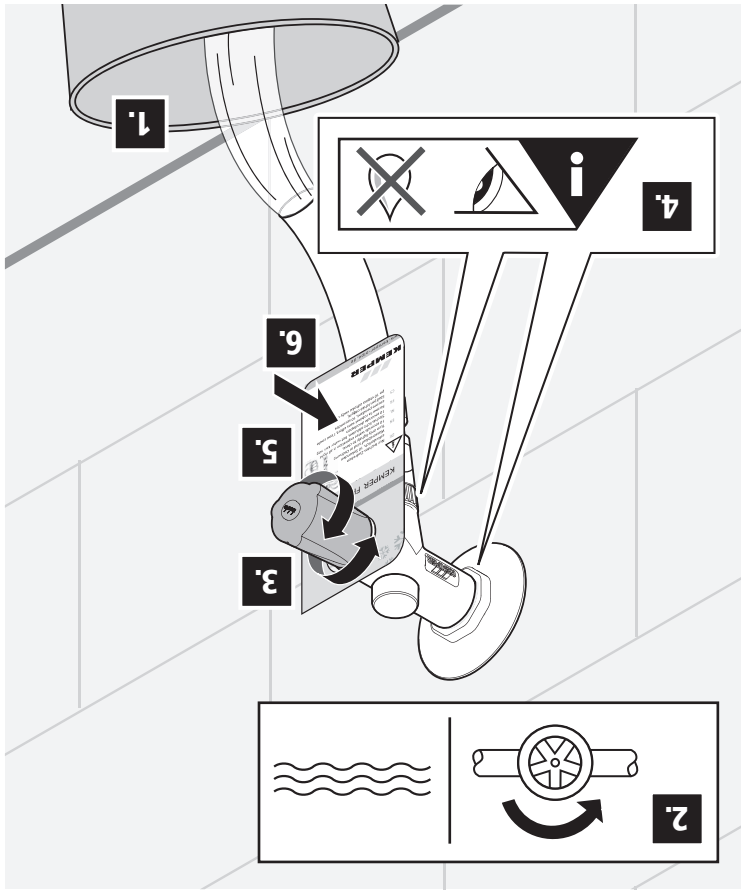


14

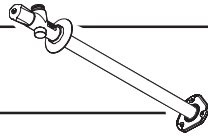


15





16



+

KEMPER UK & Ireland Ltd.
 2 Ripple Court Brookeridge business park
 Twynning
 Tewkesbury
 Glos, GL20 6FG
 Phone +44 16 84 - 85 49 30
 Fax +44 16 84 - 85 49 31
 www.kemper-uk.com
 info@kemper-uk.com



K410057401011-00 / 04.2018

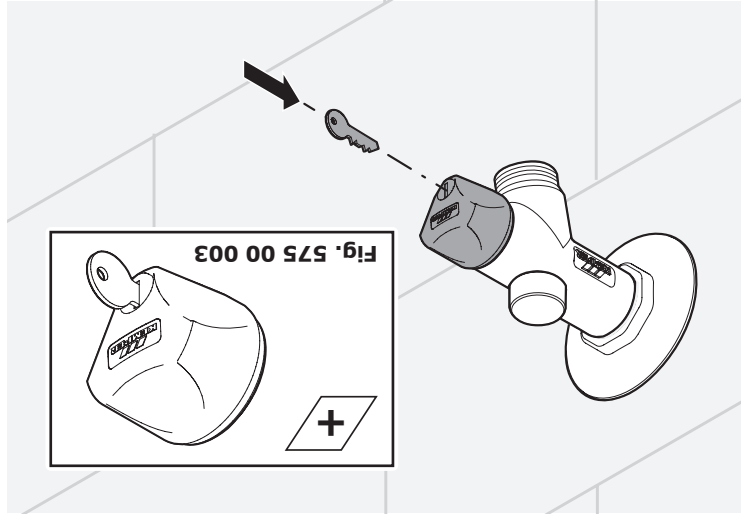


Fig. 575 00 003

